



HSE NEWS

WORKING FOR YOU TO KEEP YOU SAFE

Latest HSE Statistics YTD

	2014	2015
Workplace fatalities	0	0
Non-work related fatalities	0	0
Non-accidental deaths (NADs)	0	0
Lost Time Injuries (LTIs)	0	0
All injuries (excluding first aid cases)	0	0
Motor Vehicle Incidents (MVIs)	0	0
Roll over - MVIs	0	0
Serious MVIs	0	0
Lost Time Injury Frequency (LTIF)	0	0

Life Saving Rules Violations

YTD

Journey management	0
Speeding/GSM	0
Seatbelts	0
Overriding safety device	0
Working at heights	0
Permit	0
Confined space	0
Lock out tag out	0
Drugs and alcohol	0
Gas testing	0
Smoking	0
Suspended Load	0

Vehicle Class A/B Defect

YTD

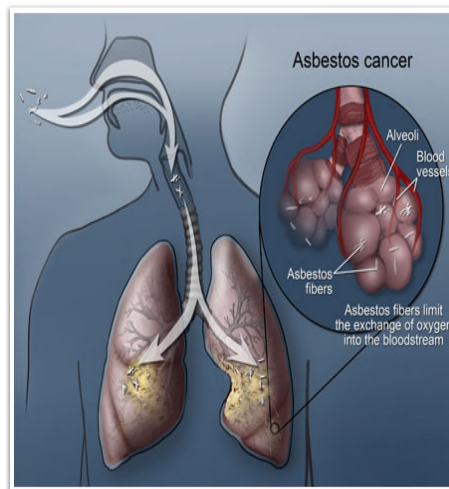
Class A	0
Class B	0

HSE TIP

Asbestos waste should be transported in an approved enclosed vehicle, skip or freight container.

[Share it with a friend](#)

Important News



Asbestos fibers are naturally occurring minerals that are resistant to heat, fire and chemicals and do not conduct electricity. For these reasons, asbestos has been used widely in many industries.

Asbestos can be found in any industrial or residential building built or refurbished before the year 2003. It is found in many of the [commonly used materials](#)^[1] in the building trade such as [sprayed coatings](#)^[2] on ceilings, walls, beams and columns, [asbestos cement](#)^[3] water tank, asbestos cement roof or tiles, asbestos cement panels, ^[4] boilers and pipes, [ACM](#)^[9] panels in fire doors, asbestos, [gaskets](#)^[10], [What You Need to Know](#) and some fire containing materials are distributed or damaged,

Currently there are about 125 million people in the world are exposed to asbestos at the workplace.

Asbestos still kills thousands of workers each year as a result of past exposure. Asbestos-related lung cancer and lungs scarring (asbestosis) from occupational exposures resulted in an average of 100,000 deaths/year.



asbestos fibers are released into the air, and when these fibers are inhaled they can cause serious diseases. These diseases will not affect you immediately; they often take a long time to develop, but once diagnosed, it is often too late to do anything. That's why it is so important that you protect yourself from getting exposed to asbestos. Asbestos can cause the following fatal and serious diseases:

- Mesothelioma, a kind of cancer which affects the lining of the lungs (pleura) and the lining surrounding the lower digestive tract (peritoneum).
- Asbestosis, a serious scarring condition of the lung which can cause progressive shortness of breath, and can be fatal.
- Pleural thickening, a dangerous condition of the lung which can cause progressive shortness of breath, and can be fatal.
- Asbestosis is only dangerous when disturbed. Don't remove asbestos unnecessarily; removing it can be more dangerous than leaving it in place and managing it.



HSE NEWS

WORKING FOR YOU TO KEEP YOU SAFE

HSE Advice Note

Workers involved in refurbishment, maintenance, construction, demolition and other similar trades are at increased risk of exposure to asbestos. In 2015, PDO developed Asbestos Risk Management procedure (PR-2107). This document outlines managers and estate service personnel responsibilities and accountabilities in managing the risks associated with asbestos. It stipulates that All Line managers and estate service personnel are responsible and accountable to the following:

- Not to introduce Asbestos or refractory ceramic fibers into new or existing facilities and buildings.
- All suspected Asbestos and Asbestos containing materials have to be tested before removal in order to identify the type of Asbestos and its concentration.
- The collected material sample has to be sent to and tested in a recognized certified lab.
- Removal, adaptation, transportation and disposal of Asbestos shall be carried out by a licensed contractor.
- Identify locations where Asbestos Asbestos and Asbestos containing materials exist and establish a register (Inventory), to include: type of Asbestos, location, condition and quantities. Make use of a certified Asbestos surveyor.
- Comply with national legislations, Ministry of environment and PDO specifications.
- Notify the Occupational Health team (MCOH) prior to the start of any Asbestos removal work and demolition of Asbestos containing buildings.
- All Asbestos workers must be subjected to Fitness to Work Medical examination.
- Identify workers involved in Asbestos operations and all shall be trained and informed about Asbestos health risks and follow the protective health and safety measures during removal, adaptation, transportation and disposal of Asbestos.
- All Asbestos workers and anyone else present in the work area where operations with asbestos are carried out must use appropriate PPE including protective clothing and proper respiratory protection.
- All work areas involving Asbestos operations shall be restricted and be marked and demarcated with warning signs.
- Prepare a plan that sets out in detail how the risks from asbestos materials will be managed and periodically review and monitor the plan.



