



# HSE NEWS

## WORKING FOR YOU TO KEEP YOU SAFE

### Latest HSE Statistics YTD

	2014	2015
Workplace fatalities	0	0
Non-work related fatalities	0	0
Non-accidental deaths (NADs)	0	0
Lost Time Injuries (LTIs)	0	0
All injuries (excluding first aid cases)	0	0
Motor Vehicle Incidents (MVIs)	0	0
Roll over - MVIs	0	0
Serious MVIs	0	0
Lost Time Injury Frequency (LTIF)	0	0

### Life Saving Rules Violations

#### YTD

Journey management	0
Speeding/GSM	0
Seatbelts	0
Overriding safety device	0
Working at heights	0
Permit	0
Confined space	0
Lock out tag out	0
Drugs and alcohol	0
Gas testing	0
Smoking	0
Suspended Load	0

### Vehicle Class A/B Defect

#### YTD

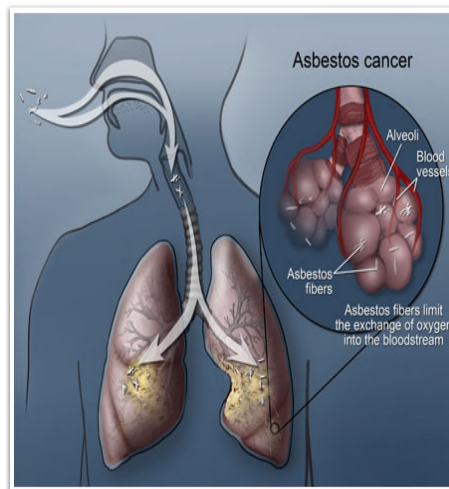
Class A	0
Class B	0

### HSE TIP

Asbestos waste should be transported in an approved enclosed vehicle, skip or freight container.

Share it with a friend

## Important News



Asbestos is the general term used for the fibrous silicates that also include asbestos containing materials (ACMs). Asbestos fibers are naturally occurring minerals that are resistant to heat, fire and chemicals and do not conduct electricity. For these reasons, asbestos has been used widely in many industries. There are three main types of asbestos commonly used in the industry:

- Crocidolite (commonly known as blue asbestos)
- Amosite (commonly known as brown asbestos)
- Chrysotile (commonly known as white asbestos)

### What You Need to Know

Asbestos can be found in an industrial or residential building built or refurbished before the year 2000. Asbestos is commonly used in many of the common materials found in the building, such as [sprayed coatings](#)<sup>[2]</sup> on ceilings, walls, beams and columns, [asbestos cement](#)<sup>[3]</sup> water tank, asbestos roof or tiles, asbestos cement pipes, [ACM](#)<sup>[9]</sup> panels in fire doors, asbestos [rope seals](#), [gaskets](#)

Asbestos still kills thousands of workers each year as a result of past short-term exposure. Asbestos-related lung cancer and lung scarring (asbestosis) from occupational exposures resulted in an average of 100,000 deaths/year.



vinyl [floor tiles](#)<sup>[12]</sup> and some fire blankets. When asbestos or asbestos containing materials are disturbed or damaged, asbestos fibers are released into the air, and when these fibers are inhaled they can cause serious diseases. These diseases will not affect you immediately; they often take a long time to develop, but once diagnosed, it is often too late to do anything. That's why it is so important that you protect yourself from getting exposed to asbestos. Asbestos can cause the following fatal and serious diseases:

- Mesothelioma, a kind of cancer which affects the lining of the lungs (pleura) and the lining

surrounding the lower digestive tract (peritoneum).

- Asbestosis, a serious scarring of the lungs. Asbestosis is a dangerous lung disease that can be fatal. Removing it can be more dangerous than leaving it in place and managing it.



# HSE NEWS

WORKING FOR YOU TO KEEP YOU SAFE

## HSE Advice Note

Workers involved in refurbishment, maintenance, construction, demolition and other similar trades are at increased risk of exposure to asbestos. In 2015, PDO developed Asbestos Risk Management procedure (PR-2107). This document outlines managers and estate service personnel responsibilities and accountabilities in managing the risks associated with asbestos. It stipulates that All Line managers and estate service personnel are responsible and accountable to the following:

- Not to introduce Asbestos or refractory ceramic fibers into new or existing facilities and buildings.

All suspected Asbestos and Asbestos containing materials have to be tested before removal in order to identify the type of Asbestos and its concentration.

- The collected material sample has to be sent to and tested in a recognized certified lab.
- Removal, adaptation, transportation and disposal of Asbestos shall be carried out by a licensed contractor.
- Identify locations where Asbestos Asbestos and Asbestos containing materials exist and establish a register (Inventory), to include: type of Asbestos, location, condition and quantities. Make use of a certified Asbestos surveyor.
- Comply with national legislations, Ministry of environment and PDO specifications.
- Notify the Occupational Health team (MCOH) prior to the start of any Asbestos removal work and demolition of Asbestos containing buildings.

All Asbestos workers must be subjected to Fitness to Work Medical examination.

- Identify workers involved in Asbestos operations and all shall be trained and informed about Asbestos health risks and follow the protective health and safety measures during removal, adaptation, transportation and disposal of Asbestos.
- All Asbestos workers and anyone else present in the work area where operations with asbestos are carried out must use appropriate PPE including protective clothing and proper respiratory protection.
- All work areas involving Asbestos operations shall be restricted and be marked and demarcated with warning signs.
- Prepare a plan that sets out in detail how the risks from asbestos materials will be

managed and periodically review and monitor the plan.

