



HSE NEWS

WORKING FOR YOU TO KEEP YOU SAFE

Latest HSE Statistics YTD

	2014	2015
Workplace fatalities	0	0
Non-work related fatalities	0	0
Non-accidental deaths (NADs)	0	0
Lost Time Injuries (LTIs)	0	0
All injuries (excluding first aid cases)	0	0
Motor Vehicle Incidents (MVIs)	0	0
Roll over - MVIs	0	0
Serious MVIs	0	0
Lost Time Injury Frequency (LTIF)	0	0

Life Saving Rules Violations

YTD	2014	2015
Journey management	0	0
Speeding/GSM	0	0
Seatbelts	0	0
Overriding safety device	0	0
Working at heights	0	0
Permit	0	0
Confined space	0	0
Lock out tag out	0	0
Drugs and alcohol	0	0
Gas testing	0	0
Smoking	0	0
Suspended Load	0	0

Vehicle Class A/B Defect

YTD	2014	2015
Class A	0	0
Class B	0	0

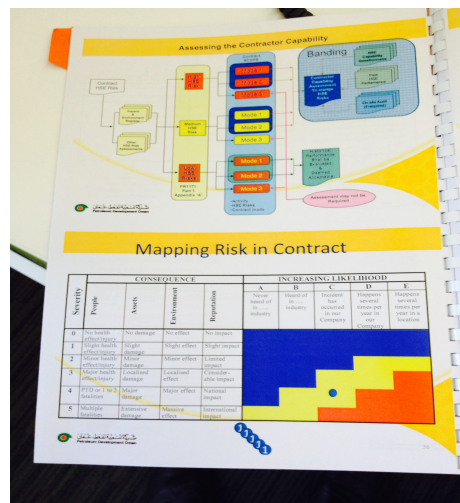
HSE TIP

HSE in Contracts-Simple yet Safe!

Check the C9 HSE Specification Minimum Requirements in your contract

[Share it with a friend](#)

Important News



At a time of high demand on staff and contractor resources, coupled with the challenges of the price of oil, it is vital that we look to simplify our procedures, specifications, guidelines and practical methods. The MSE function is playing its part in a full review of the HSE in Contract processes. The MSEM team has been working with all stakeholders to develop simpler yet safe HSE-in-contract processes.

Section 3: Organisation, responsibilities, resources, standards and training			
Organisation - Commitment and Communication: Item 3 [i]			
None	Periodic HSE meetings for special operations only	HSE meetings performed on a regular basis at management and supervisor level	In addition to C, are assigned to a rational basis
○	○	○	○
Competence and Training of manager/supervisors/ senior site staff/HSE Advisers Item 3 [ii]			
Specialized staff training	HSE training assigned to a specific person on location	HSE training applied to management but not comprehensively covered	HSE training all relevant respect
○	○	○	○
Competence and General HSE training: Item 3 [iii] [a]-[d]			
Training programme	Verbal instruction on company procedures only	Employee handbook provided and supervisor outlines, explains and demonstrates new employee's job	All employees follow new instructions
○	○	○	○
Additional training and additional training for HSE qualified staff: items 3 [iv] [a], [b] and [c]			
Training established	On-site basic training conducted occasionally	HSE training is given for specialized operations, but routine conducted	
○	○	○	○

This review focus is not about just simplifying the process but also to ensure that PDO maintains our overall risk profile, which is currently stable, and works towards continual improvement.

Question there are 7 phases of contract can you name them? see answer below

What You Need to Know

Planning-The most important phase:

Contract and HSE staff will determine the inherent risk of the contract and the management mode. Once this is completed the C9 is populated from a template. The C9 includes a demand for a risk assessment specific to the scope of work.

Tendering with PDO:

HSE evaluation of the tenderers will provide the basis for 'Banding' and the submission quality may have a significant effect on the tendering process. The T3 HSE Questionnaire has been updated this month.

Execution Phase:

The execution phase of our contracts, the implementation of HSE requirements, remains weak. If we are to improve this, then we must simplify the significant steps. What were more than 20 HSE steps have now become 12 simple steps.



HSE NEWS

WORKING FOR YOU TO KEEP YOU SAFE

HSE Advice Note

How do you manage contractors? How do contractors expect to be managed?

Contract HSE Management MODE MODE 1

The contractor provides people and tools for the execution of work under the supervision, instructions and HSE MS of the Company. The contractor has a management system to provide assurance that its personnel are qualified and healthy and that its tools and machinery are properly maintained and suitable for the job. Type of activity - Small Maintenance Company working on project- owned equipment at a Company location (Work related hours and events to be captured).

MODE 2

The contractor executes all aspects of the job under its own HSE MS that interfaces with the Company HSE MS and provides the necessary instructions and supervision and verifies the proper functioning of its HSE MS. The Company is responsible for verifying the overall effectiveness of the HSE management controls put in place by the contractor. Type of activity - drilling rig, well services, completion or subsea intervention contract, EPC contract. (Work-related hours and events to be captured).

MODE 3

Not "Work-Related Activities". The contractor operates within its own HSE MS that has no interfaces with Company. HSE performance data is not reported to the Company. Typical contract activity off-site manufacture or fabrication of major standard components, design, office work. Answer to the question:

Planning
Tender
Evaluation and Award
Mobilisation
Executions
De-Mob
Close out



