



HSE NEWS

WORKING FOR YOU TO KEEP YOU SAFE

Latest HSE Statistics YTD

2013:2014

Workplace fatalities	
Non-work related fatalities	
Non-accidental deaths (NADs)	
Lost Time Injuries (LTIs)	
All injuries (excluding first aid cases)	
Motor Vehicle Incidents (MVIs)	
Roll over - MVIs	
Serious MVIs	
Lost Time Injury Frequency (LTIF)	

Life Saving Rules Violations

YTD

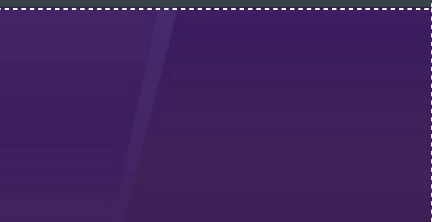
Journey management	
Speeding/GSM	
Seatbelts	
Overriding safety device	
Working at heights	
Permit	
Confined space	
Lock out tag out	
Drugs and alcohol	
Gas testing	

Vehicle Class A/B Defect

YTD

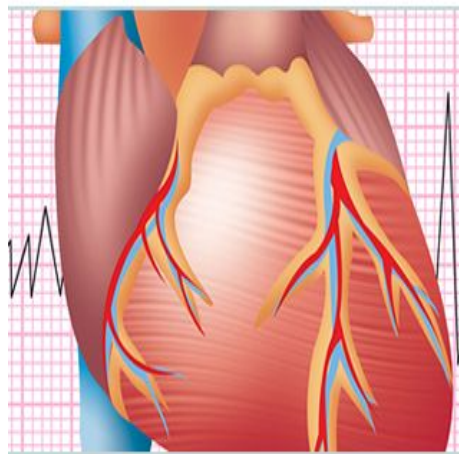
Class A	
Class B	

HSE TIP

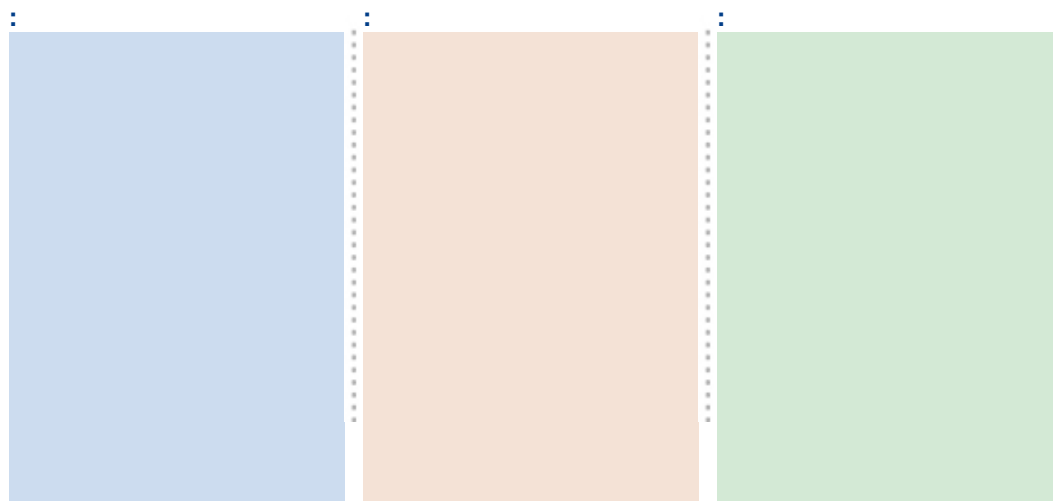


[Share it with a friend](#)

Important News



What You Need to Know





HSE NEWS

WORKING FOR YOU TO KEEP YOU SAFE

HSE Advice Note

SAFETY CULTURE STARTS WITH LEADERSHIP



1 LEADERSHIP BEST PRACTICES INFLUENCE ORGANISATIONAL CULTURE



Transformational leadership style:

- Inspiring
- Influencing
- Challenging
- Engaging

Leadership best practices:

- Vision
- Credibility
- Action Orientation
- Safety Communication
- Collaboration
- Feedback & Recognition
- Accountability

2 ORGANISATIONAL CULTURE INFLUENCES SAFETY OUTCOMES



Organisational Culture:

- Just & Fair
- Leader-Member Engagement
- Management Credibility
- Visible Organisational Support
- Teamwork
- Work Group Relations
- Organisational Value for Safety
- Upward Communication
- Ability to Approach Others

3 WORKING INTERFACE



Working Interface is a combination of 3 components:

1. Facilities & Equipment (plant, machinery)
2. Processes (codes of conduct, production lines)
3. Workers

At-Risk Behaviours exist at this working interface

The Soolok Process addresses the methodology to mitigate At-Risk Behaviours at the working interface.